

## Băbuță Filip-Razvan & Răileanu George



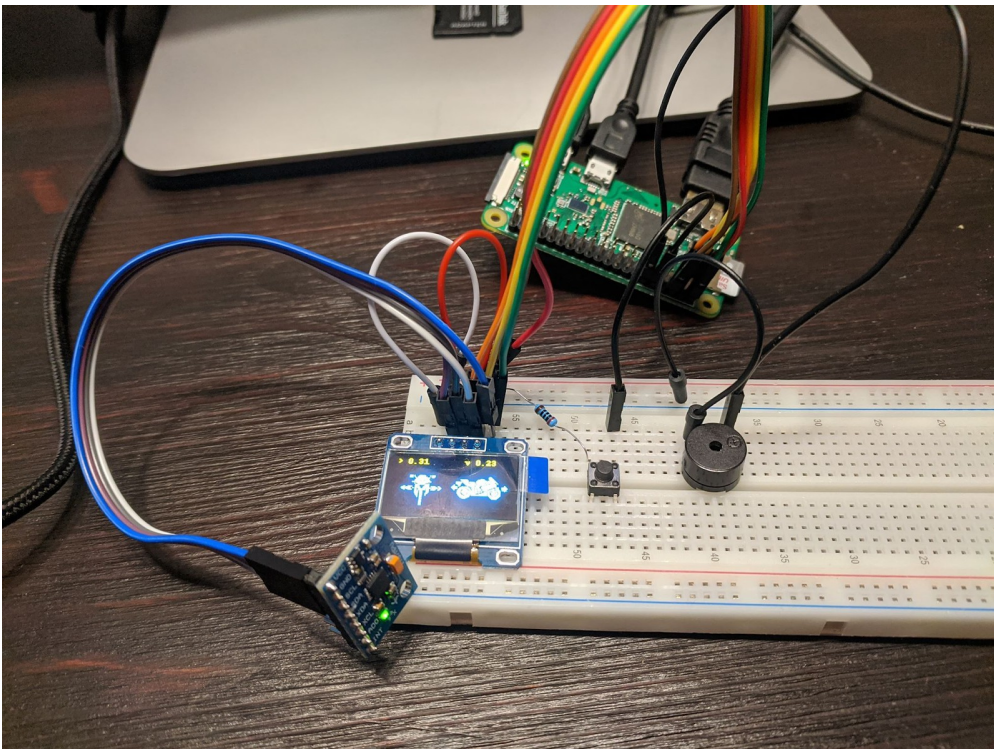
Poza

Mail : [george.raileanu98@gmail.com](mailto:george.raileanu98@gmail.com) [filip-razvan.babuta@student.tuiasi.ro](mailto:filip-razvan.babuta@student.tuiasi.ro)

Tema : Inclinometru cu sistem alarma pentru motocicletă

Planificarea Taskurilor: Răileanu George: Gyro + Server Mail

Băbuță Filip-Razvan: Interfața Grafică + integrarea codului



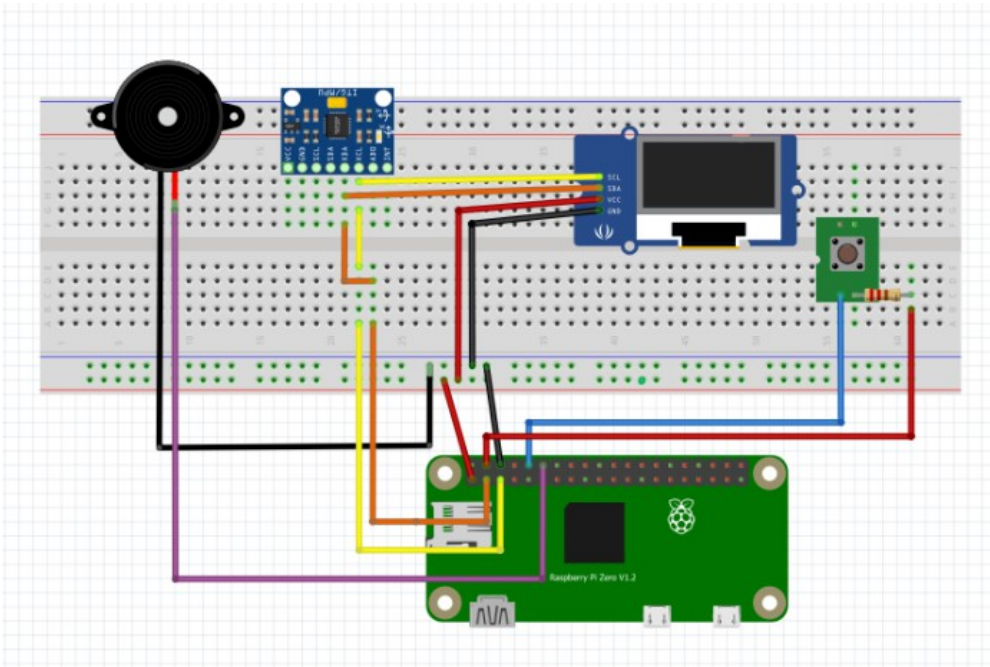
Video: <https://youtu.be/ruHEr6esZfw>

**Descriere:**Our device has two operating modes: Drive Mode and Alarm Mode ( you can toggle between them using the push button).If Drive Mode is selected, the device will calibrate itself first, then it will show the Roll and Pitch angles on the OLED display. If the device senses that the motorcycle has fallen, it will send an email to the user notifying him of what has happened.








If Alarm Mode is selected, the device will calibrate itself, then it will show on the display that the alarm has been activated. If the device senses that the motorcycle has been moved, the device will buzz. It will also send an email to the owner, telling him that their motorcycle might not be in the same place as before.

Hackster.io: <https://www.hackster.io/georgeraileanu/motorcycle-inclinometer-427450>

## Wiring Diagram:



## Module utilize:

	Raspberry Pi Zero Wireless	x 1	<input type="checkbox"/>	<input type="checkbox"/>
	ElectroPeak 0.96" OLED 64x128 Display Module	x 1	<input type="checkbox"/>	
	DFRobot 6 DOF Sensor - MPU6050	x 1	<input type="checkbox"/>	
	Buzzer	x 1	<input type="checkbox"/>	<input type="checkbox"/>
	Jumper wires (generic)	x 13	<input type="checkbox"/>	<input type="checkbox"/>
	Resistor 220 ohm	x 1	<input type="checkbox"/>	
	Breadboard (generic)	x 1	<input type="checkbox"/>	<input type="checkbox"/>

