



gabriel.cozma@student.tuiasi.ro

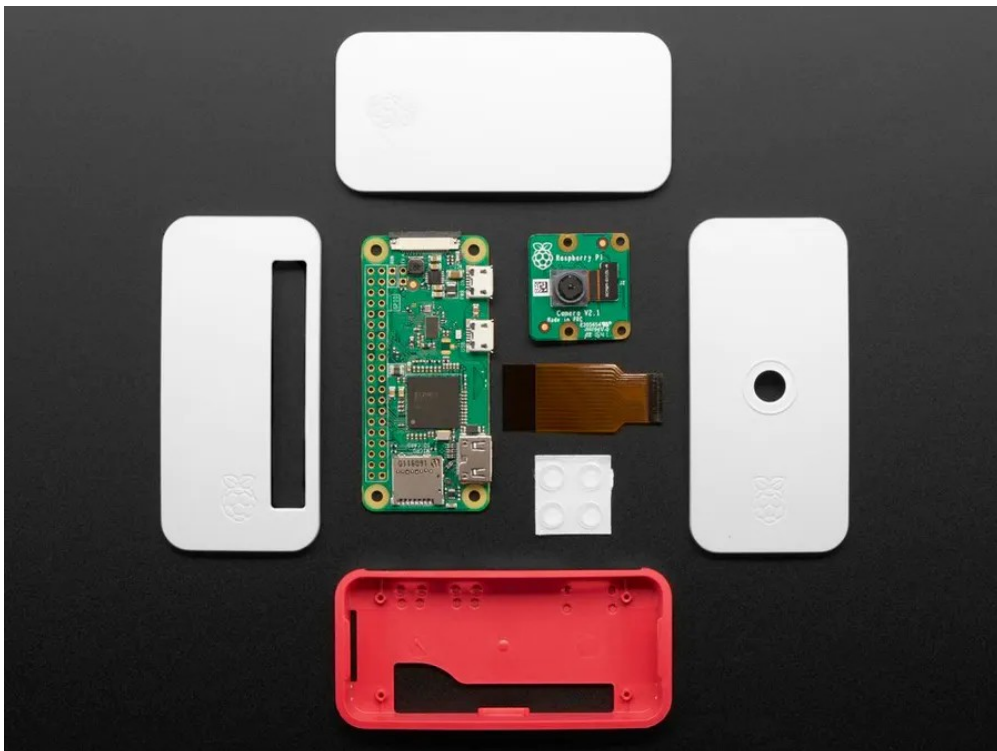
in echipa cu



Vrinceanu George

george.vrinceanu@staff.tuiasi.ro

Tema: Camera auto care inregistreaza in timp ce masina se deplaseaza.



Cover Image:

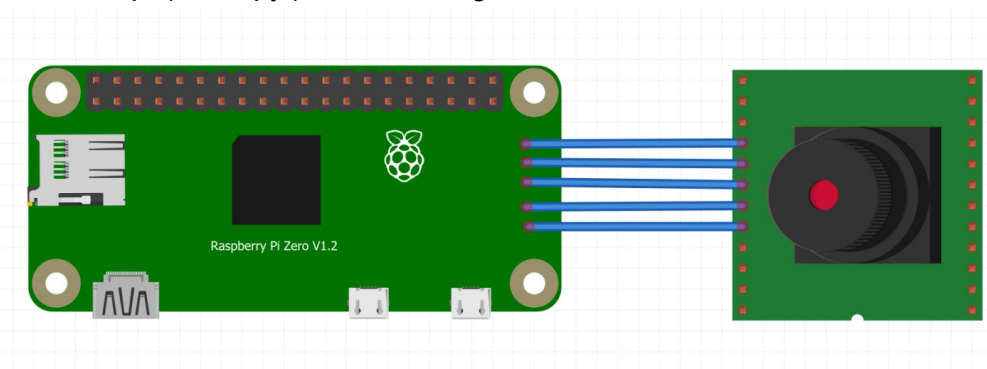
Things used in this project:

Hardware components

	Raspberry Pi Zero Wireless	× 1	 
	Raspberry Pi Pi NoIR Camera V2	× 1	
	Raspberry Pi Zero Case	× 1	
	Seeed High Accuracy Pi RTC (DS3231)	× 1	
	Step Down LM2596	× 1	

Story: I remembered looking for a Car Dash cam a couple of years ago, but never bought one as they didn't feature all the requirements that I had.

How it works: When the raspberry pi zero w is connected to the power supply, the controller opens and camera script (main.py) starts running.



Schematic:

The code: <https://www.hackster.io/gabrielcozma/car-camera-using-the-raspberry-pi-zero-1b487e>

The video: <https://youtu.be/1c8VQhCAnSc>